

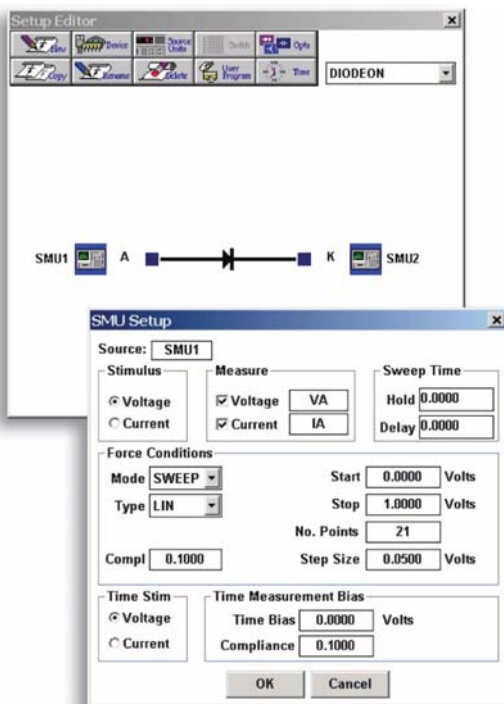
*Point. Click. Measure. It's as simple as that.*

### Automate Your HP4I56

Metrics Win4I56<sup>TM</sup> provides new life for your HP4I56A, HP4I56B, or HP4I56C parameter analyzer. This product provides PC-based control of the instrument which results in data being collected directly to the computer. Data can be further analyzed using the built-in plotting and parameter extraction tools.



Metrics Win4I56 allows laboratories to extract additional useful life out of their equipment as well as streamline the effort required to transfer data to other PC-based tools or corporate data systems.



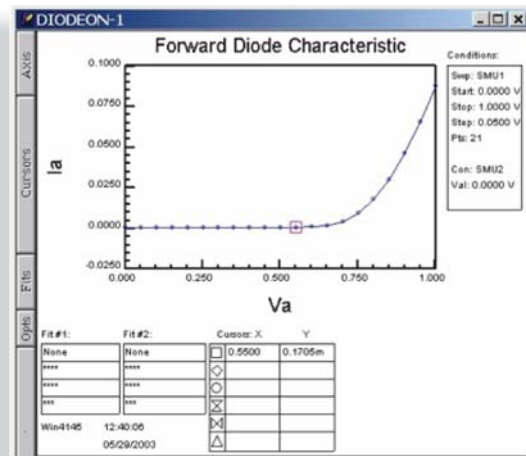
### Rapid Development

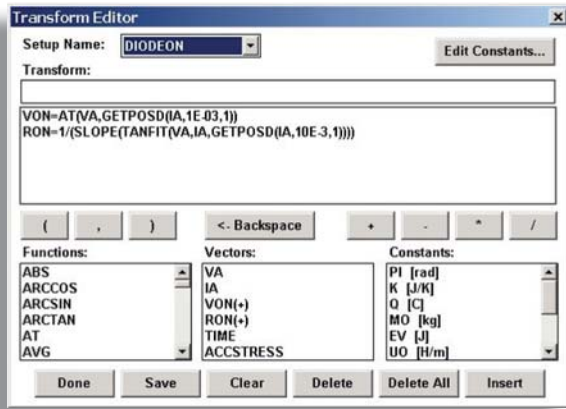
Metrics Win4I56 provides a point-and-click Windows interface for the rapid creation of tests.

Win4I56's graphical tools are shown below and allow for the complete replacement of front-panel control of the HP4I56.

### Graphical Tools

Metrics Win4I56 includes plot tools for the visualization of measured data. Data can be grouped for presentation on the same axis. In addition graphical line-fit tools are provided for analysis of the data. The resulting plots can be printed or copied out to the Windows clipboard for movement into other applications.



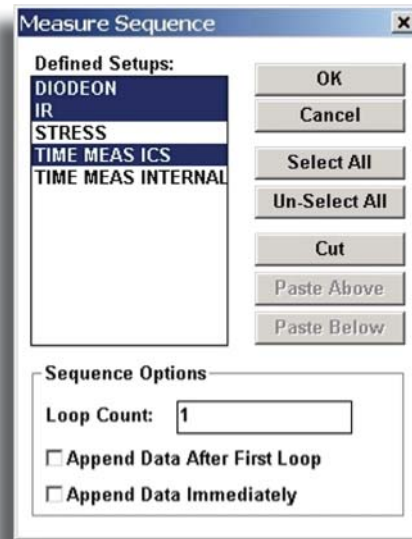


## Test Sequence Execution

Metrics Win4156 also contains a sequencing tool that allows a series of tests to be run automatically. This function when combined with the parameter extraction and plotting capability makes Win4156 a powerful tool for the collection and analysis of data using the HP4156.

## Parameter Extraction

Metrics Win4156 contains tools for the extraction of device parameters. The tools are flexible enough to allow the development of non-standard parameter definitions often needed in the research environment. The parameter definitions are automatically associated with the test. When the test is executed the parameters are automatically extracted.



## GPIB Support

Agilent Technologies  
82350, 82341, 82357

National Instruments  
PCI-GPIB, AT-GPIB/TNT, AT-GPIB/  
TNT+, PCMCIA-GPIB, USB-GPIB

\*Please see our website for more details, including the latest supported versions of the GPIB software.

## System Requirements

- Pentium 4 2GHz processor
- Microsoft Windows XP Professional SP2
- 1 GB RAM
- 4 GB hard disk
- USB Port
- CD-ROM drive
- Supported GPIB interface card
- Microsoft Internet Explorer 5.5 or greater

## License

- All Licenses are single system licenses
- Includes 90 days of technical support via email.

For more information:

[www.metricstech.com](http://www.metricstech.com) or  
(505) 761-9630